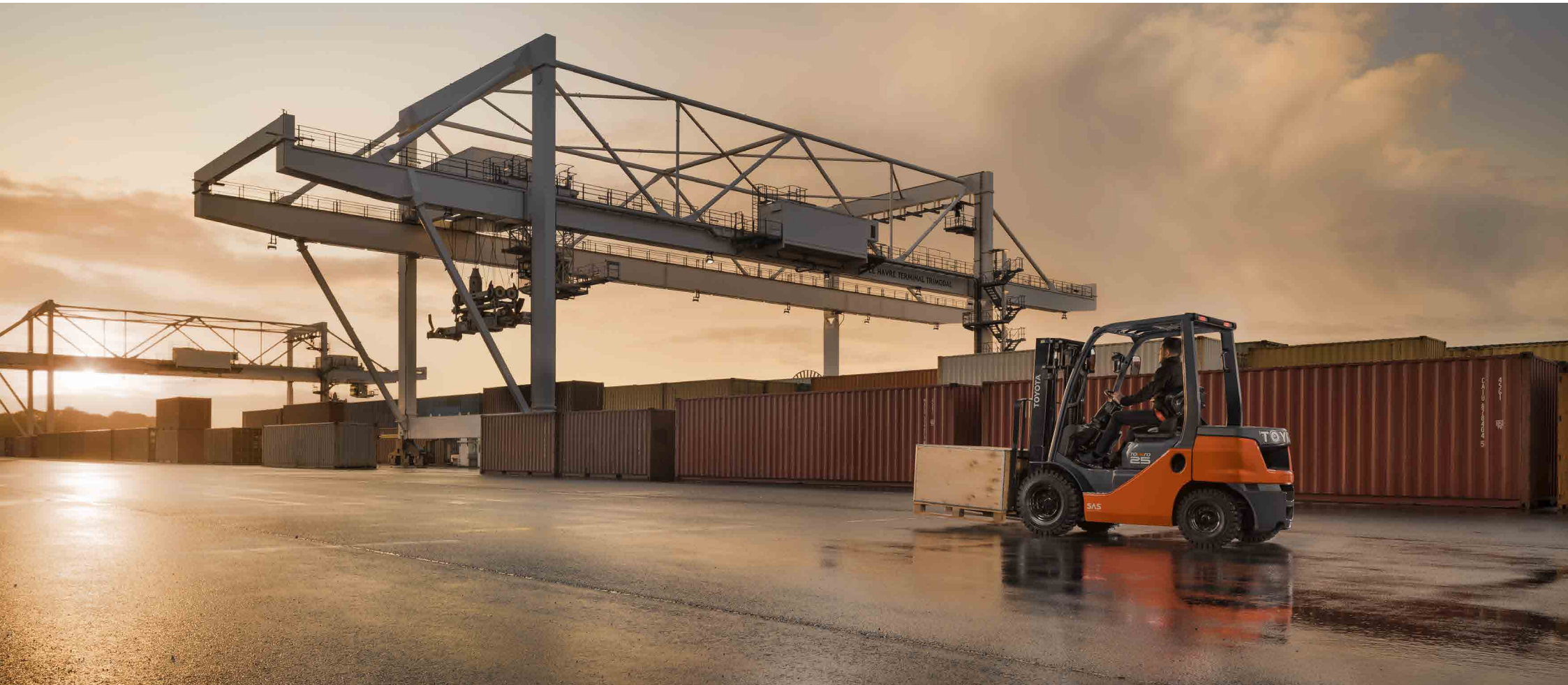


Toyota IC Counterbalanced Trucks

The Toyota Toner Range



Toyota Toner

UP TO 3.5 TONNES WITH TORQUE CONVERTER OR HYDROSTATIC TRANSMISSION



Highly productive and reliable trucks for light to heavy-duty applications

1.5 – 3.5 TONNES LOAD CAPACITIES
DIESEL OR LPG ENGINES
TORQUE CONVERTER OR HYDROSTATIC TRANSMISSION

P.4 (TC) / P.6 (HST)

Toyota Toner

FROM 3.5 UP TO 8.0 TONNES WITH TORQUE CONVERTER TRANSMISSION



Robust and durable trucks for heavy work or multi-pallet handling

3.5 – 8.0 TONNES LOAD CAPACITIES
DIESEL OR LPG ENGINES
TORQUE CONVERTER TRANSMISSION

P.8



TOYOTA TONERO

WITH TORQUE CONVERTER

The Toyota Toner is a versatile family of engine-powered counterbalanced trucks suitable for all applications up to 3,5 tonnes. They offer stability and productivity during these light to heavy-duty outdoor applications, and provide driver comfort as well as all-round visibility thanks to the wide range of cabins. These fast and manoeuvrable trucks are available with diesel (surpassing latest Stage V regulations) or LPG engines.

SPECIFICATIONS

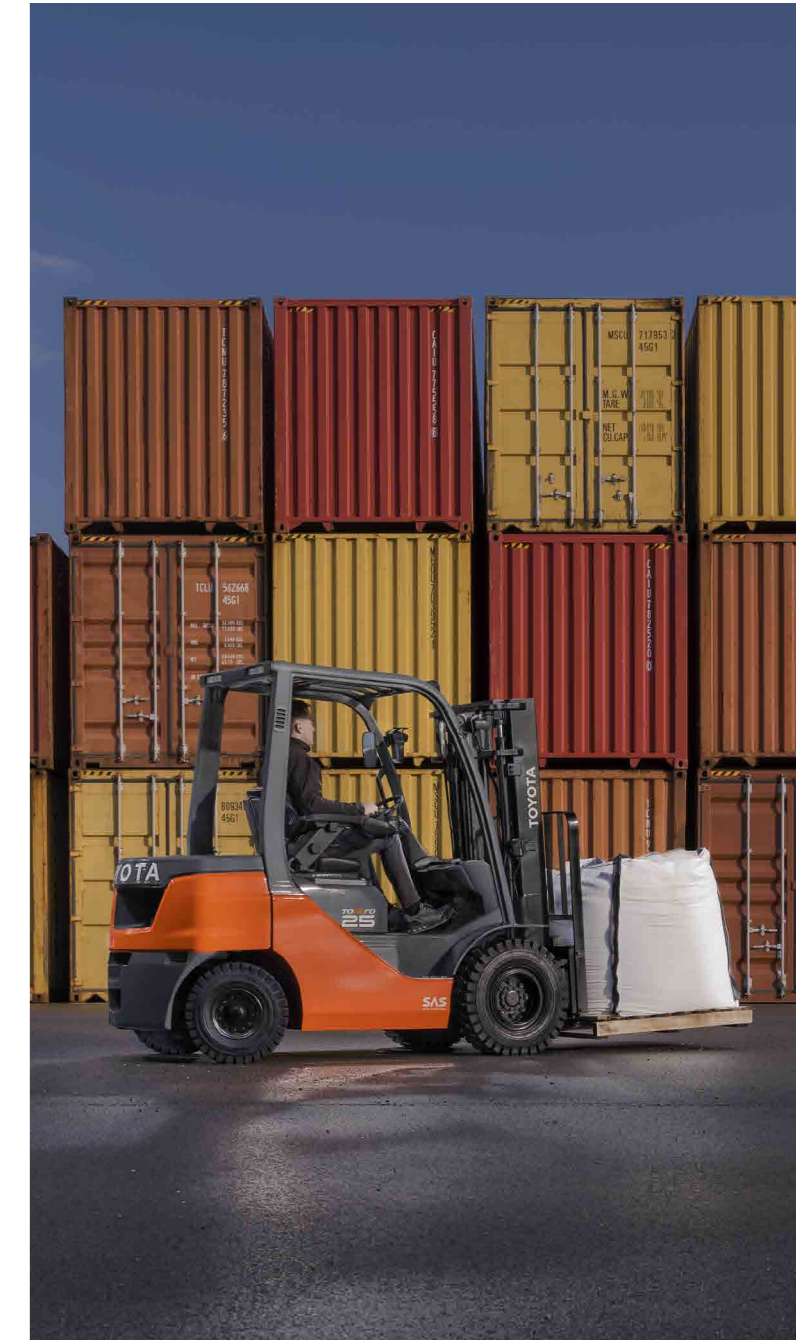
Load capacity: 1.5, 1.75, 2.0, 2.5, 3.0, 3.5 t @ 500 mm load centre

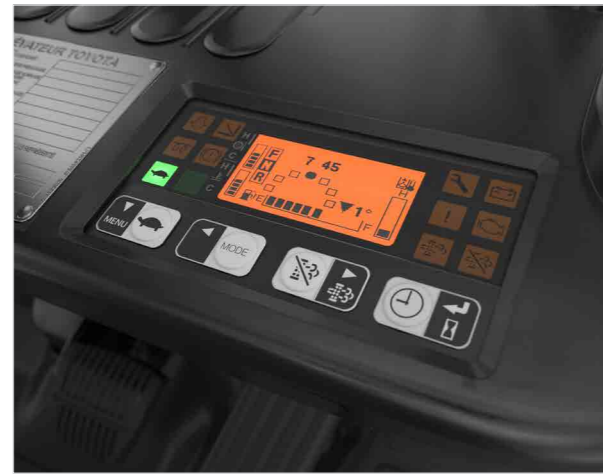
Maximum lift height: 7.0 m

Engine choice: . EU Stage V: 1DZIII (diesel – 17,5 kW for 1,5 to 1,8 t)
 . 1ZS (diesel – 41 kW)
 . Non-EU: 1DZIII (diesel – 36 kW for 1,5 to 3,5 t)
 . 4Y (LPG – 38/42 kW)

Available with: | **Site**

SAS





New display including all-in-one controls for more efficiency.



12S engine including a DPF (diesel particulate filter) for cleaner and leaner operations, surpassing Stage V regulations.

● standard ○ option

Load handling

	Safety	Durability	Productivity	Driveability	02-8FGF15	42-8DF15	02-8FGF18	42-8DF18	02-8FGF20	52-8DF20	02-8FGF25	52-8DF25	02-8FGF30	52-8DF30	02-8FGF35	52-8DF35	02-8FGKF20
Wide Visible Mast (V)	●				●	●	●	●	●	●	●	●	●	●	●	●	●
Full-free 2-stage mast (FV)					○	○	○	○	○	○	○	○	○	○	○	○	○
Full-free 3-stage mast (FSV)					○	○	○	○	○	○	○	○	○	○	○	○	○
Hydraulic cushioned forks			●		○	○	○	○	○	○	○	○	○	○	○	○	○
Hydraulic accumulator					○	○	○	○	○	○	○	○	○	○	○	○	○
Fully oil-charged lift cylinder					○	○	○	○	○	○	○	○	○	○	○	○	○
Anti-rust rollers		●			○	○	○	○	○	○	○	○	○	○	○	○	○
Integrated sideshift		●			○	○	○	○	○	○	○	○	○	○	○	○	○
Hook-on sideshift					○	○	○	○	○	○	○	○	○	○	○	○	○
Fork positioner		●	●		○	○	○	○	○	○	○	○	○	○	○	○	○

Engine

Lpg fuel system exclusive type with 3-way catalytic convertor	●				●	●	●	●	●	●	●	●	●	●	●	●	●
Diesel version with diesel particle filter					●	●	●	●	●	●	●	●	●	●	●	●	●
Hydrodynamic transmission			●		●	●	●	●	●	●	●	●	●	●	●	●	●
Pre-cleaner		●			○	○	○	○	○	○	○	○	○	○	○	○	○
Cyclone air cleaner (dual elements)		●			○	○	○	○	○	○	○	○	○	○	○	○	○
Lpg fuel system convertible type				●	○	○	○	○	○	○	○	○	○	○	○	○	○
Lpg remaining fuel warning device				●	○	○	○	○	○	○	○	○	○	○	○	○	○
Ultrasonic doppler lp				●	○	○	○	○	○	○	○	○	○	○	○	○	○
Lpg refillable tank				●	○	○	○	○	○	○	○	○	○	○	○	○	○
Upswept exhaust				●	○	○	○	○	○	○	○	○	○	○	○	○	○
High-capacity alternator	●				○	○	○	○	○	○	○	○	○	○	○	○	○
High capacity battery				●	○	○	○	○	○	○	○	○	○	○	○	○	○
Engine oil quick drain				●	○	○	○	○	○	○	○	○	○	○	○	○	○
Low-noise model				●	○	○	○	○	○	○	○	○	○	○	○	○	○
High gradability spec				●	○	○	○	○	○	○	○	○	○	○	○	○	○
2-Stator t/c					○	○	○	○	○	○	○	○	○	○	○	○	○
Transmission protection system		●			○	○	○	○	○	○	○	○	○	○	○	○	○
Hyd oil cooler		●			○	○	○	○	○	○	○	○	○	○	○	○	○
Fully hydraulic power steering				●	○	○	○	○	○	○	○	○	○	○	○	○	○
Load sensing power steering				●	○	○	○	○	○	○	○	○	○	○	○	○	○
12V power supply				●	○	○	○	○	○	○	○	○	○	○	○	○	○

Safety features

Toyota sas (system of active safety)	●				●	●	●	●	●	●	●	●	●	●	●	●	●
Operator presence sensing system					●	●	●	●	●	●	●	●	●	●	●	●	●
Orange safety belt					●	●	●	●	●	●	●	●	●	●	●	●	●
Safety belt recognition switch					●	●	●	●	●	●	●	●	●	●	●	●	●
Speed control (max & turtlespeed)				●	○	○	○	○	○	○	○	○	○	○	○	○	○
Travel and load handling control	●				○	○	○	○	○	○	○	○	○	○	○	○	○

● standard ○ option

Lights and indicators

	Safety	Durability	Productivity	Driveability	02-8FGF15	42-8DF15	02-8FGF18	42-8DF18	02-8FGF20	52-8DF20	02-8FGF25	52-8DF25	02-8FGF30	52-8DF30	02-8FGF35	52-8DF35	02-8FGKF20
Led headlights	●				○	○	○	○	○	○	○	○	○	○	○	○	○
Led fr combination light					○	○	○	○	○	○	○	○	○	○	○	○	○
Mast additional headlights					○	○	○	○	○	○	○	○	○	○	○	○	○
Top additional headlights					○	○	○	○	○	○	○	○	○	○	○	○	○
Bottom additional headlights					○	○	○	○	○	○	○	○	○	○	○	○	○
Low profile led mast mounted headlights					○	○	○	○	○	○	○	○	○	○	○	○	○
Led rear combination lights					●	●	●	●	●	●	●	●	●	●	●	●	●
Rear combination lights guard					○	○	○	○	○	○	○	○	○	○	○	○	○
Led-rear working light (selective lighting condition)	●				○	○	○	○	○	○	○	○	○	○	○	○	○
Add. Rear led working light					○	○	○	○	○	○	○	○	○	○	○	○	○
Rotary beacon					○	○	○	○	○	○	○	○	○	○	○	○	○
Flashing beacon					○	○	○	○	○	○	○	○	○	○	○	○	○
Lowered flashing beacon					○	○	○	○	○	○	○	○	○	○	○	○	○
Blue light (selective lighting condition)					○	○	○	○	○	○	○	○	○	○	○	○	○
Rear-view mirror, right and left sides					○	○	○	○	○	○	○	○	○	○	○	○	○
Panoramic mirror					○	○	○	○	○	○	○	○	○	○	○	○	○
Smart access					○	○	○	○	○	○	○	○	○	○	○	○	○
Keypad					○	○	○	○	○	○	○	○	○	○	○	○	○
I_site with shock sensor					○	○	○	○	○	○	○	○	○	○	○	○	○
E-bar					○	○	○	○	○	○	○	○	○	○	○	○	○

Body

Antistatic strap					○	○	○	○	○	○	○	○	○	○	○	○	○
Key off head light off system					○	○	○	○	○	○	○	○	○	○	○	○	○
Reflector					○	○	○	○	○	○	○	○	○	○	○	○	○
Radiator screen					○	○	○	○	○	○	○	○	○	○	○	○	○
Back-up buzzer					○	○	○	○	○	○	○	○	○	○	○	○	○
Tilt cylinder hole boots					○	○	○	○	○	○	○	○	○	○	○	○	○
Front mud guard					○	○	○	○	○	○	○	○	○	○	○	○	○
High profile spec					○	○	○	○	○	○	○	○	○	○	○	○	○
Steering pin boots					○	○	○	○	○	○	○	○	○	○	○	○	○
Rear mud guard					○	○	○	○	○	○	○	○	○	○	○	○	○

Special applications

Drive in rack					○	○	○	○	○	○	○	○	○	○	○	○	○
High capacity cooling spec.					○	○	○	○	○	○	○	○	○	○	○	○	○
Cold area package					○	○	○	○	○	○	○	○	○	○	○	○	○

● standard ○ option

Comfort

	Safety	Durability	Productivity	Driveability	02-8FGF15	42-8DF15	02-8FGF18	42-8DF18	02-8FGF20	52-8DF20	02-8FGF25	52-8DF25	02-8FGF30	52-8DF30	02-8FGF35	52-8DF35	02-8FGKF20
Lexaan overhead guard sheets					○	○	○	○	○	○	○	○	○	○	○	○	○
W/o overhead guard sheet					○	○	○	○	○	○	○	○	○	○	○	○	○
Front windshield & roof					○	○	○	○	○	○	○	○	○	○	○	○	○
Half cabin (front windshield roof and rear window)					○	○	○	○	○	○	○	○	○	○	○	○	○
Half cabin with canvas door					○	○	○	○	○	○	○	○	○	○	○	○	○
Heater for half cabin					○	○	○	○	○	○	○	○	○	○	○	○	○
Steel cabin without heater					○	○	○	○	○	○	○	○	○	○	○	○	○
Steel cabin with heater	●				○	○	○	○	○	○	○	○	○	○	○	○	○
Steel cabin with 2 heaters	●				○	○	○	○	○	○	○	○	○	○	○	○	○
Premium cabin with full floating driver compartment					○	○	○	○	○	○	○	○	○	○	○	○	○
Aircooler (only on premium cabin)					○	○	○	○	○	○	○	○	○	○	○	○	○
Fabric seat msg65 premium					○	○	○	○									



TOYOTA TONERO

HST

The Toyota Toner is a versatile family of engine-powered counterbalanced trucks suitable for all applications up to 3,5 tonnes. They offer stability and productivity during these light to heavy-duty outdoor applications, and provide driver comfort as well as outstanding all-round visibility thanks to the wide range of cabins. The hydrostatic transmission is perfect for drivers who prefer automatic braking when releasing the accelerator. Stronger braking ability and low engine noise, as well as new Toyota in-house developed software are available for the full range. These fast and manoeuvrable trucks are available with diesel or LPG engines.

SPECIFICATIONS

Load capacity: 1.5, 1.75, 2.0, 2.5, 3.0, 3.5 t @ 500 mm load centre

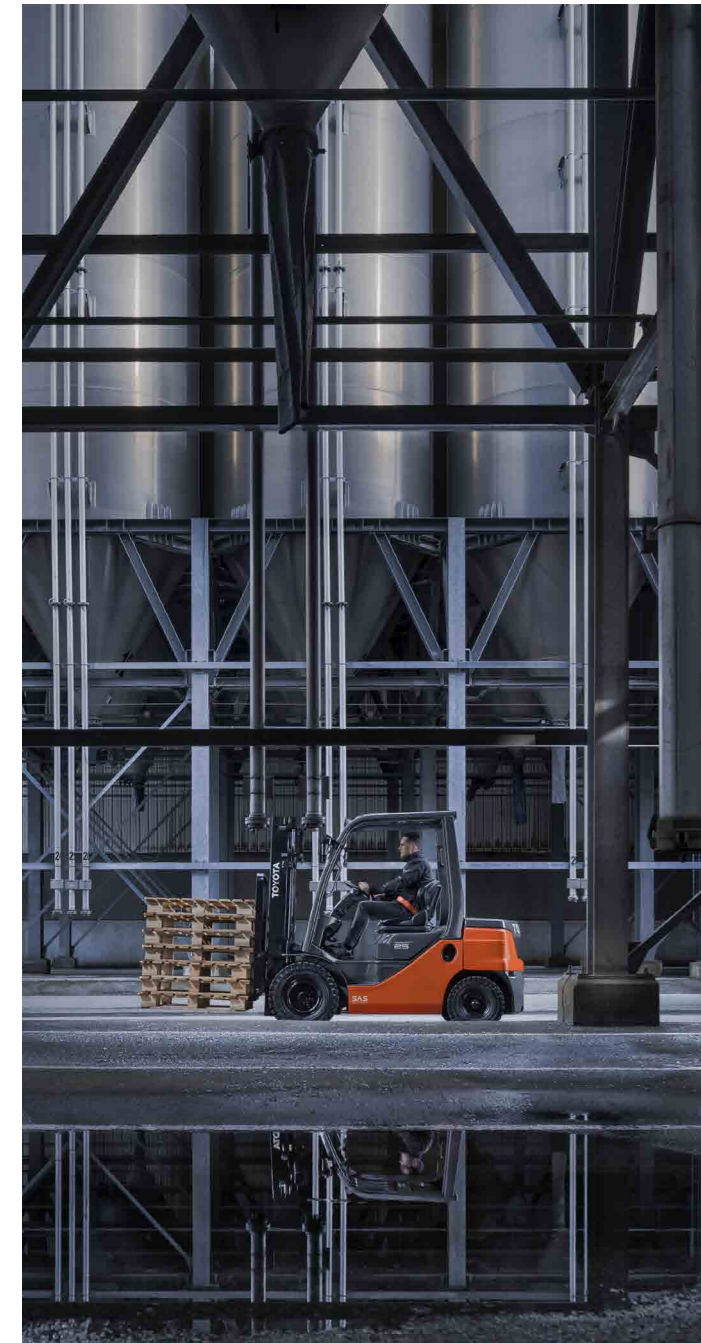
Maximum lift height: 7.0 m

Engine choice: • 1ZS (Diesel – 41 kW – DPF for 2t to 3,5t)
• 4Y (LPG – 38/42 kW)

Available with: Site

SAS





New display including all-in-one controls for more efficiency.



New front LED light for more visibility and improved productivity.

● standard ◦ option

Load handling

	Safety	Durability	Productivity	Driveability	06-8FG15F	06-8FG18F	06-8FG20F	06-8FD20F	06-8FG25F	06-8FD25F	06-8FG30F	06-8FD30F	06-8FG35F	06-8FD35F
Wide Visible Mast (V)					●	●	●	●	●	●	●	●	●	●
Full-free lift 2-stage mast (FV)					◦	◦	◦	◦	◦	◦	◦	◦	◦	◦
Wide visible mast (FSV)					◦	◦	◦	◦	◦	◦	◦	◦	◦	◦
Hook-on sideshift					◦	◦	◦	◦	◦	◦	◦	◦	◦	◦
Integrated sideshift					◦	◦	◦	◦	◦	◦	◦	◦	◦	◦
Integrated side shifter & fork positioner					◦	◦	◦	◦	◦	◦	◦	◦	◦	◦
Hydraulic oil temp. gauge					◦	◦	◦	◦	◦	◦	◦	◦	◦	◦
Fully oil charged lift cylinder					◦	◦	◦	◦	◦	◦	◦	◦	◦	◦
Anti-rust roller					◦	◦	◦	◦	◦	◦	◦	◦	◦	◦
Fork vibration damper					◦	◦	◦	◦	◦	◦	◦	◦	◦	◦

Engine

Lpg fuel system exclusive type with 3-way catalytic convertor					●	●	●	●	●	●	●	●	●	●
Diesel version with diesel particle filter									●	●	●	●	●	●
Hydstatic transmission					●	●	●	●	●	●	●	●	●	●
Pre-cleaner					◦	◦	◦	◦	◦	◦	◦	◦	◦	◦
Cyclone air cleaner (dual elements)					◦	◦	◦	◦	◦	◦	◦	◦	◦	◦
Lpg remaining fuel warning device					◦	◦	◦	◦	◦	◦	◦	◦	◦	◦
Ultrasonic doppler lp					◦	◦	◦	◦	◦	◦	◦	◦	◦	◦
Lpg refillable tank					◦	◦	◦	◦	◦	◦	◦	◦	◦	◦
Upswept exhaust					◦	◦	◦	◦	◦	◦	◦	◦	◦	◦
High-capacity alternator					◦	◦	◦	◦	●	●	●	●	●	●
High capacity battery					◦	◦	◦	◦	◦	◦	◦	◦	◦	◦
Engine oil quick drain					◦	◦	◦	◦	◦	◦	◦	◦	◦	◦
Fully hydraulic power steering					●	●	●	●	●	●	●	●	●	●
Load sensing power steering					●	●	●	●	●	●	●	●	●	●
12V power supply					◦	◦	◦	◦	◦	◦	◦	◦	◦	◦

Body

Antistatic strap					◦	◦	◦	◦	◦	◦	◦	◦	◦	◦
Key off head light off system					●	●	●	●	●	●	●	●	●	●
Automatic parking brake					◦	◦	◦	◦	◦	◦	◦	◦	◦	◦
Reflector					◦	◦	◦	◦	◦	◦	◦	◦	◦	◦
Back-up buzzer					◦	◦	◦	◦	◦	◦	◦	◦	◦	◦
Tilt cylinder hole boots					◦	◦	●	●	●	●	●	●	●	●
Front mud guard					◦	◦	◦	◦	◦	◦	◦	◦	◦	◦
High profile spec					◦	◦	◦	◦	◦	◦	◦	◦	◦	◦
Steering pin boots					◦	◦	◦	◦	◦	◦	◦	◦	◦	◦
Rear mud guard					◦	◦	◦	◦	◦	◦	◦	◦	◦	◦

● standard ◦ option

Lights and indicators

	Safety	Durability	Productivity	Driveability	06-8FG15F	06-8FG18F	06-8FG20F	06-8FD20F	06-8FG25F	06-8FD25F	06-8FG30F	06-8FD30F	06-8FG35F	06-8FD35F
Led headlights					●	●	●	●	●	●	●	●	●	●
Led fr combination light					◦	◦	◦	◦	◦	◦	◦	◦	◦	◦
Mast additional headlights					◦	◦	◦	◦	◦	◦	◦	◦	◦	◦
Top additional headlights					◦	◦	◦	◦	◦	◦	◦	◦	◦	◦
Bottom additional headlights					◦	◦	◦	◦	◦	◦	◦	◦	◦	◦
Low profile led mast mounted headlights					◦	◦	◦	◦	◦	◦	◦	◦	◦	◦
Led rear combination lights					●	●	●	●	●	●	●	●	●	●
Rear combination lights guard					◦	◦	◦	◦	◦	◦	◦	◦	◦	◦
Led-rear working light (selective lighting condition)					◦	◦	◦	◦	◦	◦	◦	◦	◦	◦
Add. Rear led working light					◦	◦	◦	◦	◦	◦	◦	◦	◦	◦
Rotary beacon					◦	◦	◦	◦	◦	◦	◦	◦	◦	◦
Flashing beacon					◦	◦	◦	◦	◦	◦	◦	◦	◦	◦
Lowered flashing beacon					◦	◦	◦	◦	◦	◦	◦	◦	◦	◦
Blue light (selective lighting condition)					◦	◦	◦	◦	◦	◦	◦	◦	◦	◦
Rear-view mirror, right and left sides					◦	◦	◦	◦	◦	◦	◦	◦	◦	◦
Panoramic mirror					◦	◦	◦	◦	◦	◦	◦	◦	◦	◦
Smart access					◦	◦	◦	◦	◦	◦	◦	◦	◦	◦
Keypad					◦	◦	◦	◦	◦	◦	◦	◦	◦	◦
I_site with shock sensor					◦	◦	◦	◦	◦	◦	◦	◦	◦	◦
E-bar					◦	◦	◦	◦	◦	◦	◦	◦	◦	◦

Comfort

Lexaan overhead guard sheets					●	●	●	●	●	●	●	●	●	●
Full floating driver compartment					◦	◦	◦	◦	◦	◦	◦	◦	◦	◦
W/o overhead guard sheet					◦	◦	◦	◦	◦	◦	◦	◦	◦	◦
Front windshield & roof					◦	◦	◦	◦	◦	◦	◦	◦	◦	◦
Half cabin (front windshield roof and rear window)					◦	◦	◦	◦	◦	◦	◦	◦	◦	◦
Half cabin with canvas door					◦	◦	◦	◦	◦	◦	◦	◦	◦	◦
Heater for half cabin					◦	◦	◦	◦	◦	◦	◦	◦	◦	◦
Advanced steel cabin with heater (container height)					◦	◦	◦	◦	◦	◦	◦	◦	◦	◦
Advanced steel cabin with heater)					◦	◦	◦	◦	◦	◦	◦	◦	◦	◦
Premium cabin					◦	◦	◦	◦	◦	◦	◦	◦	◦	◦
Aircooler (only on premium cabin)					◦	◦	◦	◦	◦	◦	◦	◦	◦	◦
Fabric seat msg65 premium					◦	◦	◦	◦	◦	◦	◦	◦	◦	◦
Vinyl seat msg65 premium					◦	◦	◦	◦	◦	◦	◦	◦	◦	◦
Fabric seat msg75 premium					◦	◦	◦	◦	◦	◦	◦	◦	◦	◦
Vinyl seat msg75 premium					◦	◦	◦	◦	◦	◦	◦	◦	◦	◦
Ors cloth seat w/suspension					◦	◦	◦	◦	◦	◦	◦	◦	◦	◦
Swivel seat (vinyl)					◦	◦	◦	◦	◦	◦	◦	◦	◦	◦

● standard ◦ option

Comfort

Multi adjustable armrest with minilevers					◦	◦	◦	◦	◦	◦	◦	◦	◦	◦
Multi adjustable armrest with multi functional levers					◦	◦	◦	◦	◦	◦	◦	◦	◦	◦
Writing table					◦	◦	◦	◦	◦	◦	◦	◦	◦	◦
Reading light					◦	◦	◦	◦	◦	◦	◦	◦	◦	◦
Rear-pillar assist grip					◦	◦	◦	◦	◦	◦	◦	◦	◦	◦
Left hand shift lever					◦	◦	◦	◦	◦	◦	◦	◦	◦	◦
Telescopic steering (column)					◦	◦	◦	◦	◦	◦	◦	◦	◦	◦

Safety features

Toyota sas (system of active safety)					●	●	●	●	●	●	●	●	●	●
Operator presence sensing system					◦	◦	◦	◦	◦	◦	◦	◦	◦	◦
Orange safety belt					◦	◦	◦	◦	◦	◦	◦	◦	◦	◦
Safety belt recognition switch					◦	◦	◦	◦	◦	◦	◦	◦	◦	◦
Speed control (max & turtlespeed)					◦	◦	◦	◦	◦	◦	◦	◦	◦	◦
Travel and load handling control					◦	◦	◦	◦	◦	◦	◦	◦	◦	◦

Special applications

Drive in rack					◦	◦	◦	◦	◦	◦	◦	◦	◦	◦
High capacity cooling spec.					◦	◦	◦	◦	◦	◦	◦	◦	◦	◦
Cold area package					◦	◦	◦	◦	◦	◦	◦	◦	◦	◦

Toyota SAS

The unique System of Active Stability (SAS) is the world's first active system for controlling forklift stability. By protecting the operator and load when driving, turning and lifting, SAS provides advanced technology increasing safety in the workplace and improving productivity. It includes: SAS Active Mast Tilt Angle Control, SAS Active Mast Tilt Speed Control, SAS Fork Levelling, SAS Active Steering Synchronizer, SAS Swing Lock Cylinder.

Toyota industrial engines

All Toyota engines are built in-house, for quality and long-term reliability. They are specifically designed for industrial applications, providing quick acceleration and optimised fuel efficiency. HST models come with a 1ZS engine with a Diesel particulate filter surpassing Stage V regulation ensuring lean and clean material handling operations.

Hydrostatic transmission

The hydrostatic (HST) version offers an alternative to the torque converter version by delivering powerful engine braking and acceleration with pre-set driving parameters, quick direction change, independent lift and drive functionality, an electrical parking brake and 'stop-on-ramp' functionality. Improvements include the availability of the high-power 3-cylinder diesel engine (2-3.5t). Stronger braking ability and low engine noise, as well as new Toyota in-house developed software are available for the full range.

Outstanding driver experience

As from 2t the HST model offers ultimate driver comfort thanks to the full floating driver compartment lowering vibration and noise levels for optimal productivity.

TPS-based reliability

Like all Toyota trucks, Toyota Tonero trucks are built according to the Toyota Production System (TPS), assuring the highest levels of quality, durability and reliability.



TOYOTA TONERO HIGH-TONNAGE

Powerful and precise in all applications, the Toyota Toner higher tonnage family takes productivity to a new level. Designed to move loads up to 8 tonnes with ease, they are built for intensive operation, multi-load handling or for use with heavy attachments.

SPECIFICATIONS

Load capacity: 3.5, 4.0, 4.5, 5.0, 6.0, 7.0, 8.0 t @ 600 mm load centre

Maximum lift height: 6.0 m

Engine choice: . EU Stage V: 1KD (diesel – 55 kW)
. 1FS (LPG/ gasoline – 62 kW)

Available with: | Site

SAS



Toyota Material Handling in Europe

Total coverage

The Toyota Material Handling network extends to over 30 countries in Europe with more than 4500 mobile technicians.

Always local – with global support

Wherever you are located in Europe, we are always local, due to our extensive coverage, but with the stability and back-up of a worldwide organisation.

Made in Europe

Over 90% of trucks we sell are built in our own European factories, in Sweden, France and Italy – all to TPS quality standards. We employ over 3000 production staff in Europe and work with over 300 European suppliers.

Approximately 15% of our European production is exported to other parts of the world.

